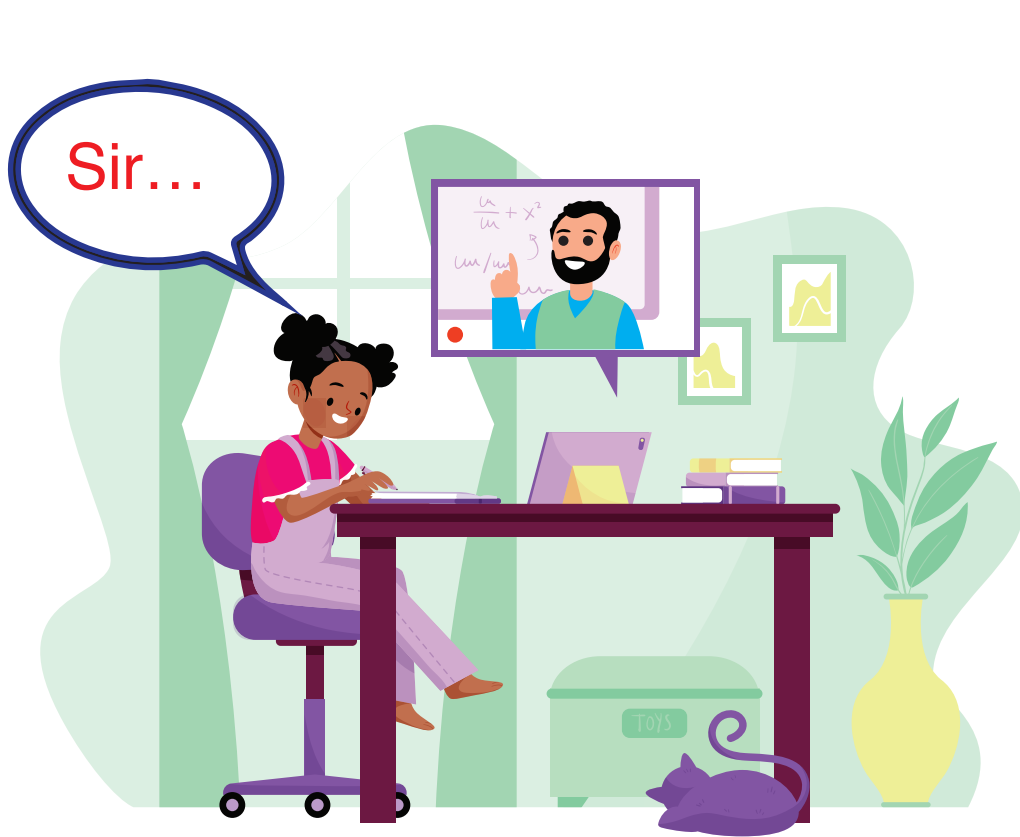


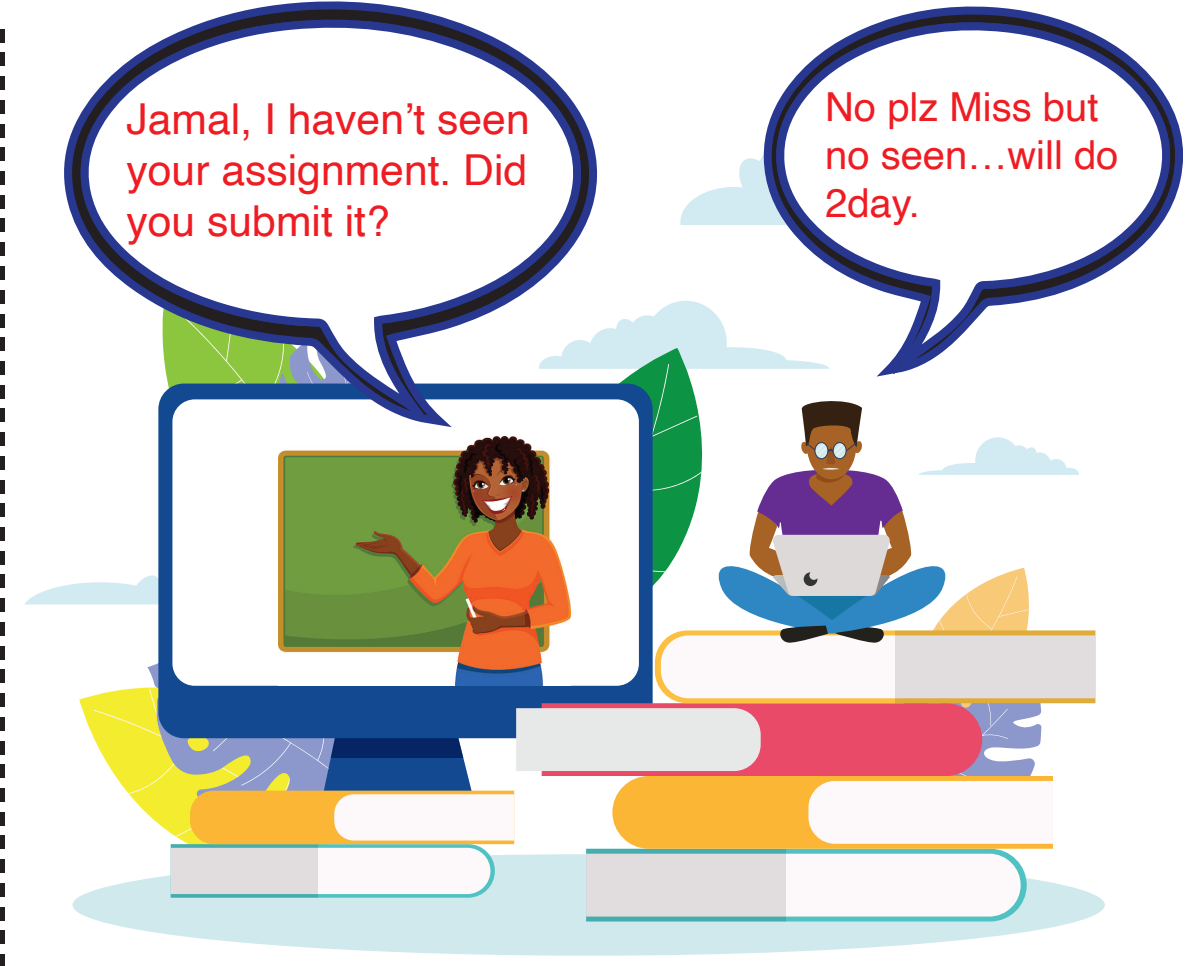
WELCOME TO E-LEARNING



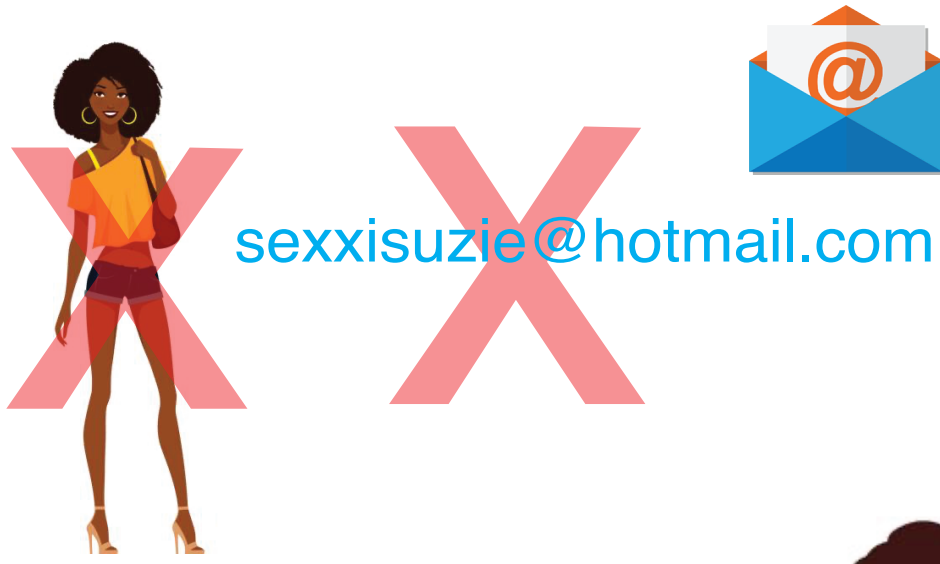
Continue to greet your teachers with the courtesy expected.



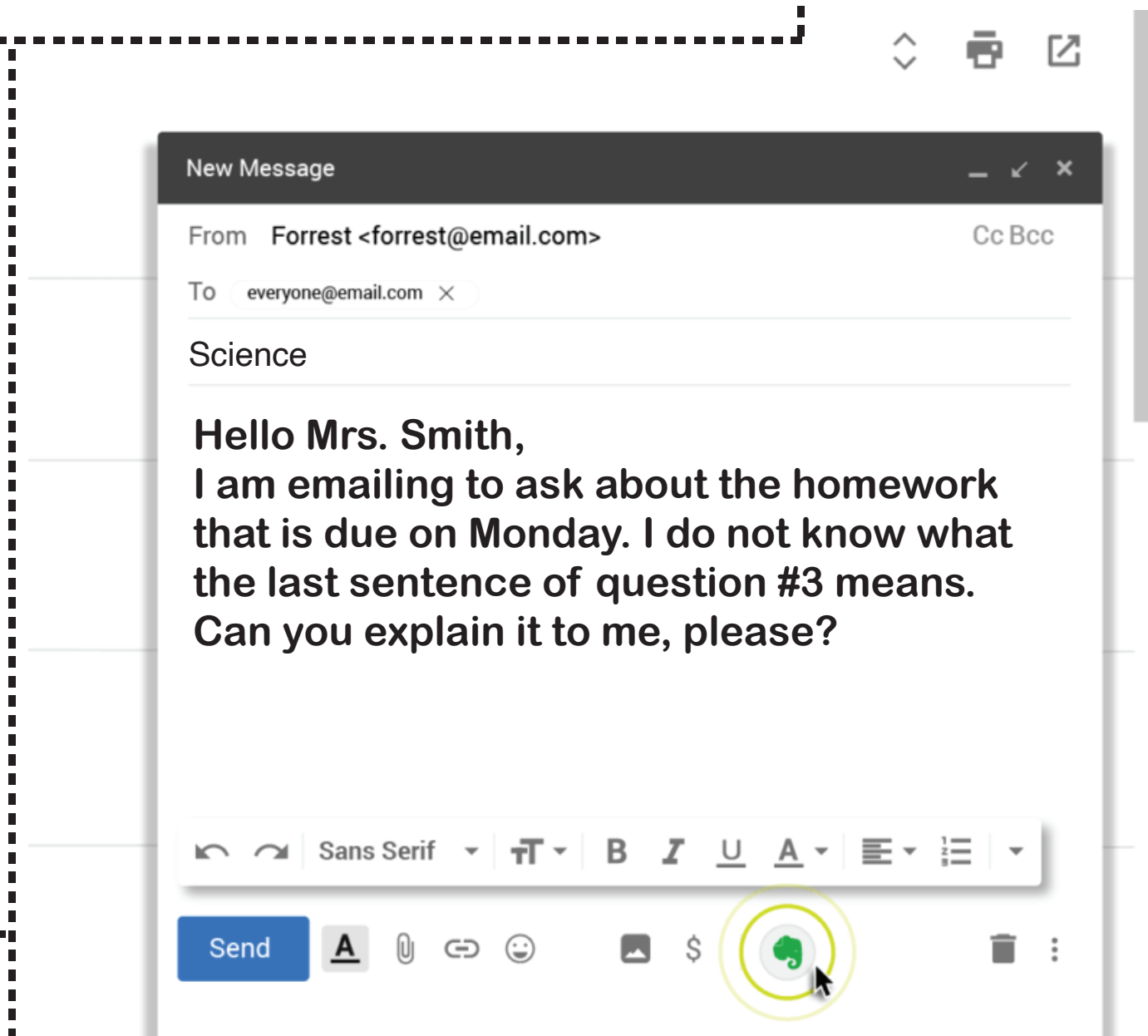
Do not collaborate (work) with other students on your online assignments unless directed to do so by your teacher.



No Jamal! Avoid slangs and social media language. Use complete sentences.



Use email addresses and profile pictures that are appropriate for an educational environment.

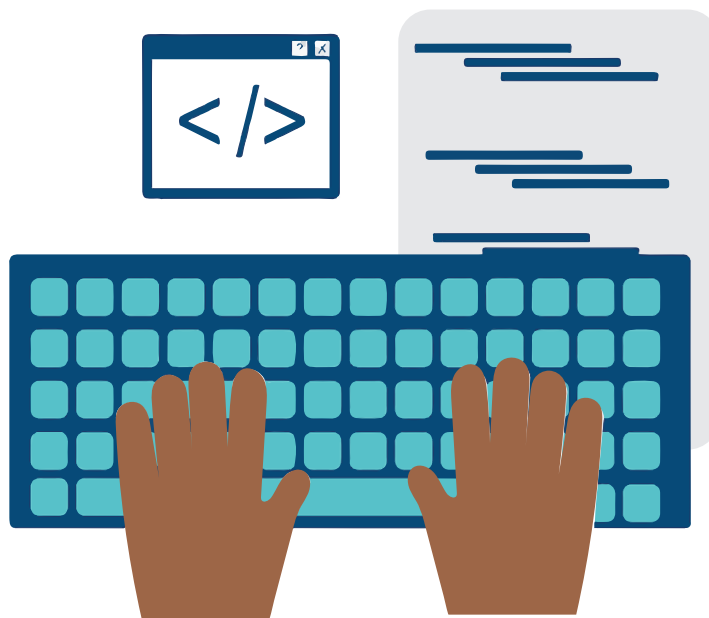


Be polite and respectful in all communication with your classmates and teachers.

Intentional (Deliberate)

- Copying a friend's work
- Copying & pasting from web pages, etc. without acknowledging the sources
- Buying, downloading or borrowing a paper
- Using images from online e.g google images without permission

What is Plagiarism?

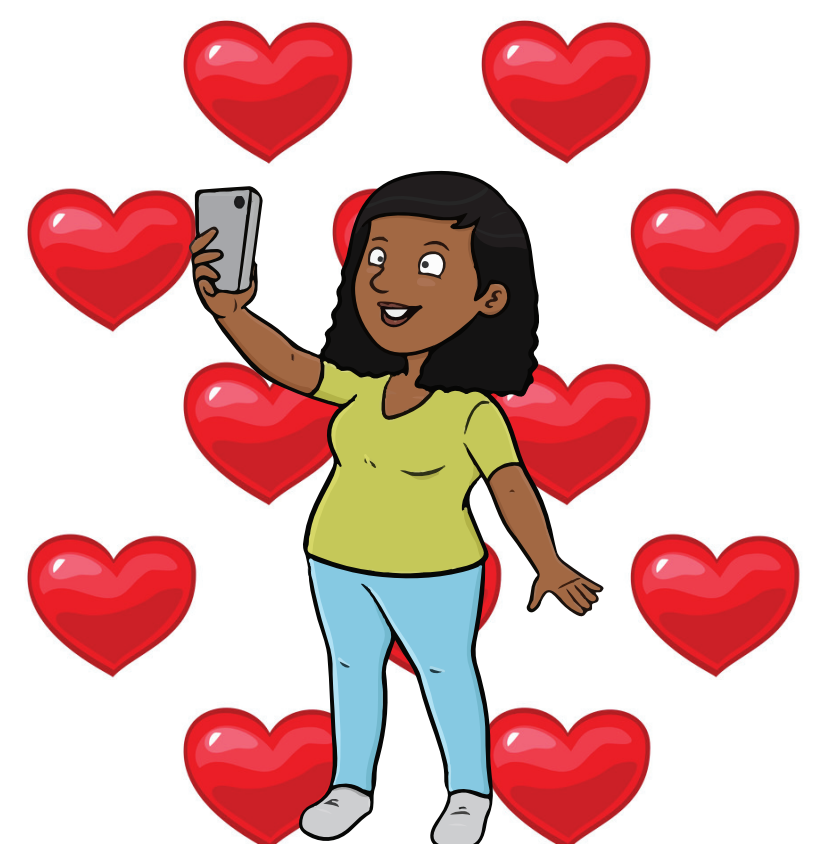
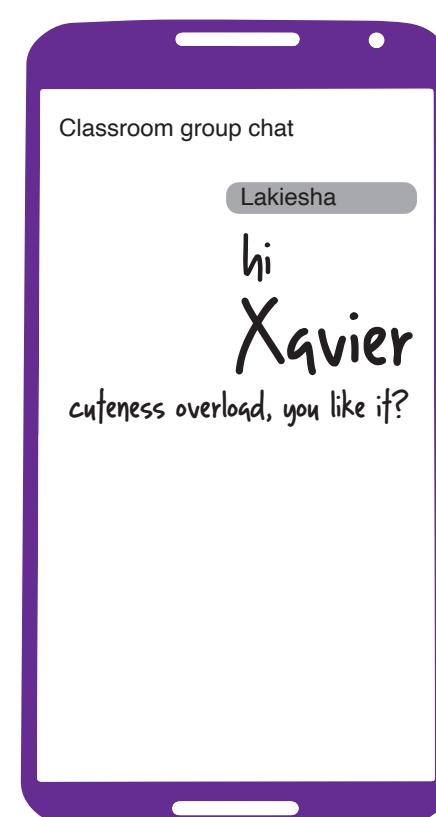
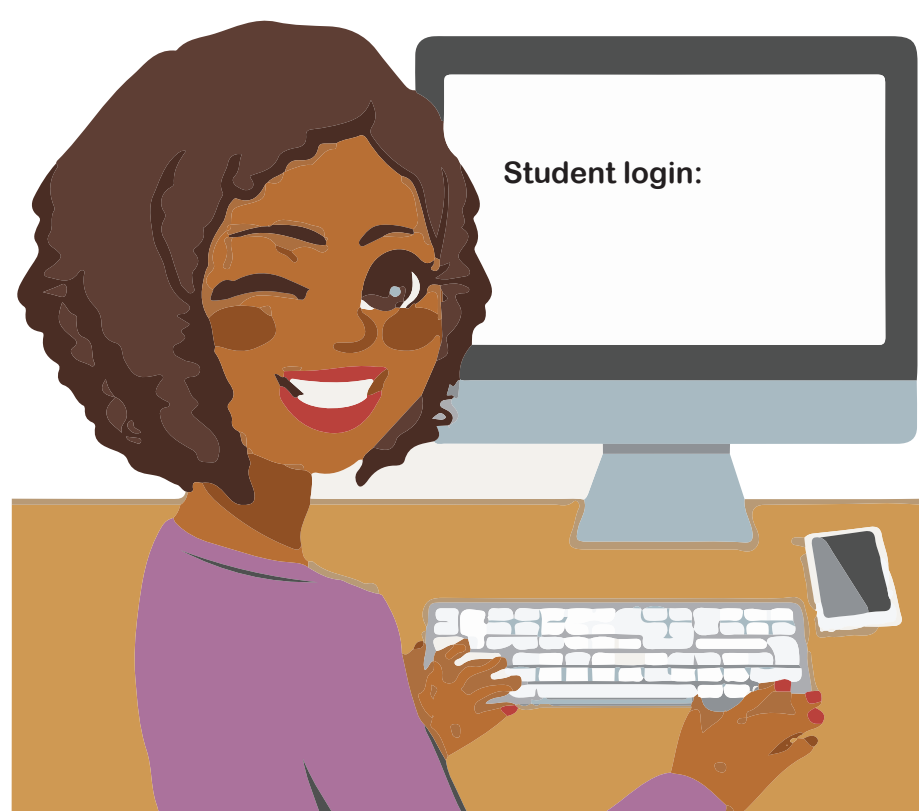


Unintentional (Accidental)

- Not knowing when and how to cite sources
- Not knowing how to paraphrase or summarize
- Not knowing what "common knowledge" is
- Recycling an old paper

Don't use content from the internet as if it is your own. That is called Plagiarism and is a form of cheating. You can get a failing grade as a result!

Do not allow anyone else to log into your student account to complete your work on your behalf.



It's all about school. Keep it clean. Any unwanted communication to your online classmates is not allowed.